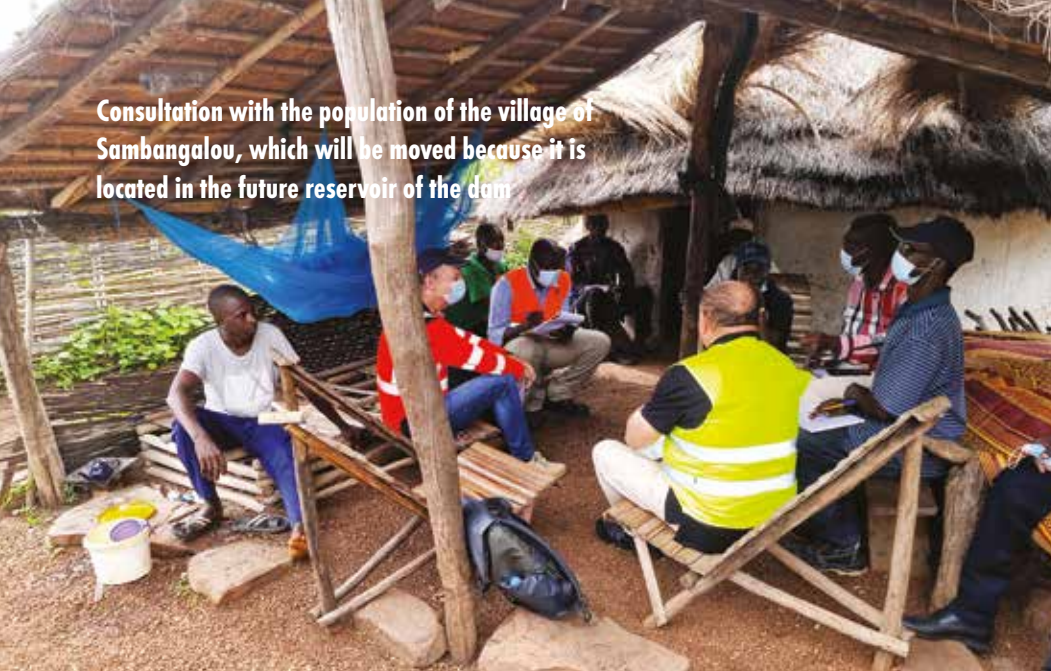
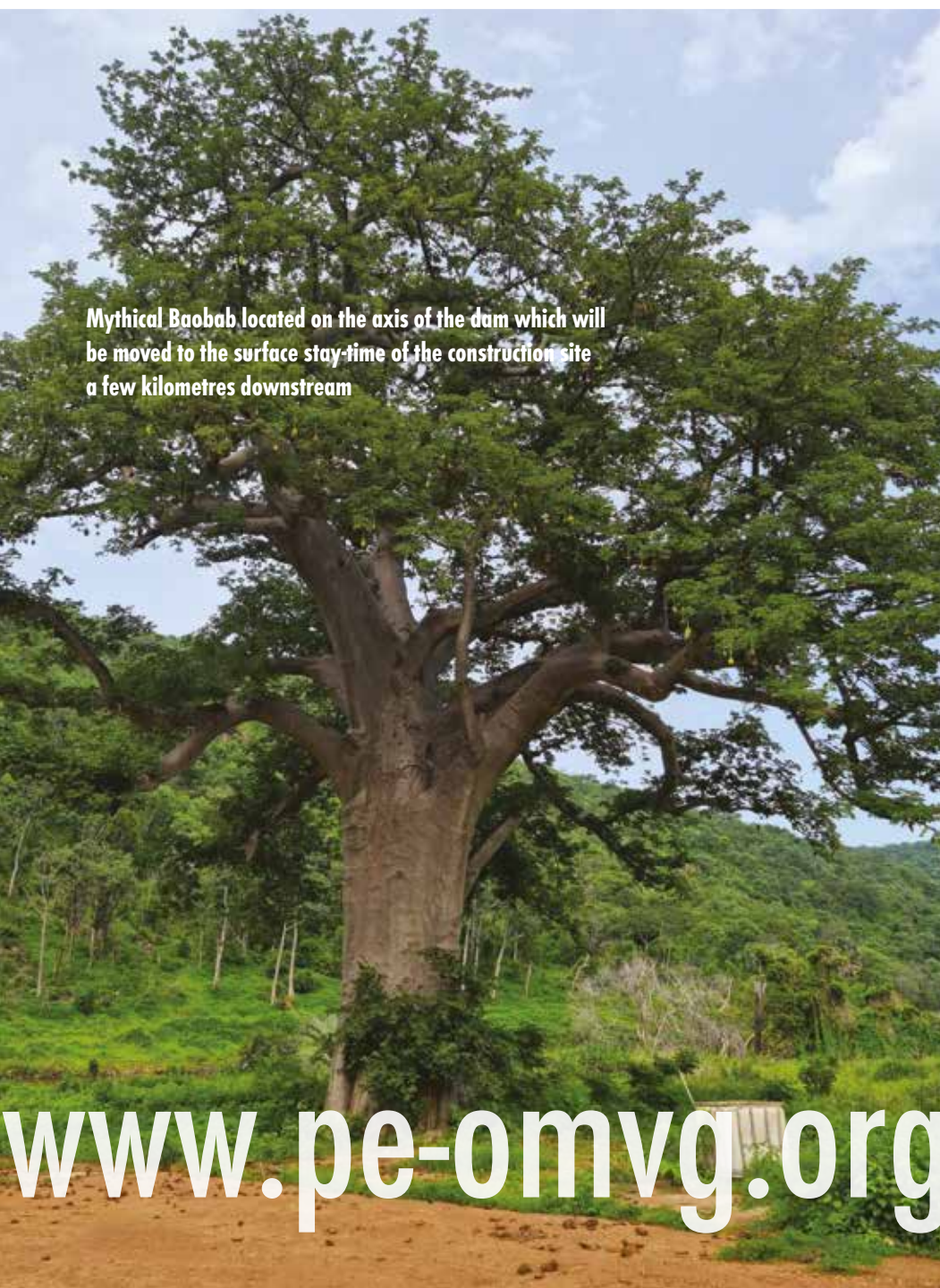


Consultation with the population of the village of Sambangalou, which will be moved because it is located in the future reservoir of the dam



Mythical Baobab located on the axis of the dam which will be moved to the surface stay-time of the construction site a few kilometres downstream



[www.pe-omvg.org](http://www.pe-omvg.org)

## Sambangalou Hydroelectric Development in figures

- **107 m** height on foundation
- **3,7 milliards de m<sup>3</sup>** of reservoir at normal operating water level
- **128 MW** installed capacity
- **402 GWH** of annual production capacity
- **188 km<sup>2</sup>** of reservoir at the normal operating water level, straddling Senegal (20%) and Guinea (80%)
- **1000 emplois** in the plan for the construction phase and **1,500 to 2,000 indirect jobs**
- **90 000 ha** of irrigation potential for agricultural land, including 50,000 ha in The Gambia and 40,000 ha in Senegal and also...
- **€388 million** million budget
- **1 contract** signed with the Vinci Construction - Andritz Group
- Flow regulation of the Gambia River resulting in a reduction of floods
- Retreat of the salt tongue in The Gambia

## Preserving the populations and their environment

The Sambangalou HED is part of the sustainable development framework. To this end, all the required studies aimed at preserving the environment have been carried out to comply with the NP6 (New Policy) of the International Finance Corporation (IFC), namely:

- The Biodiversity Management Plan to take into account all the impacts of the dam on the ecosystems.
- The Resettlement Action Plan to cover compensation for all losses of the affected population and the relocation of the villages to be displaced, which are living in the reservoir.
- An adaptive environmental flow strategy (AEFS) to cover all compensations for impacts related to the change in the hydrological regime of the river.
- In order to preserve both ecosystems and species, two action plans have been drawn up, one for the protection of chimpanzee habitats and the other for compensatory measures for the effects of the dam on the Niokolo Koba Park.

A protocol will be signed with the National Parks Directorate to monitor the implementation of all these socio-environmental programmes.

THE GAMBIA • GUINEA • GUINEA-BISSAU • SENEGAL

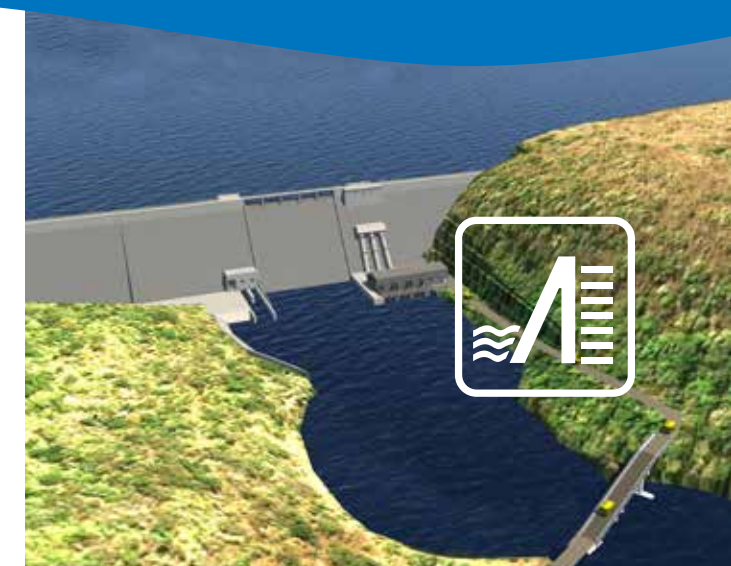
## Sambangalou Hydroelectric Development (SHED)



ORGANISATION  
POUR LA MISE EN VALEUR  
DU FLEUVE GAMBIE  
- Projet Energie -

GAMBIA RIVER BASIN  
DEVELOPMENT  
ORGANISATION  
- Energy Project -

ORGANIZAÇÃO  
PARA A VALORIZAÇÃO  
DO RIO GÂMBIA  
- Projeto Energia -



## 1994 - 2022

**Completion of technical, economic, environmental and social studies, institutional studies, financial arrangement and contractualisation**

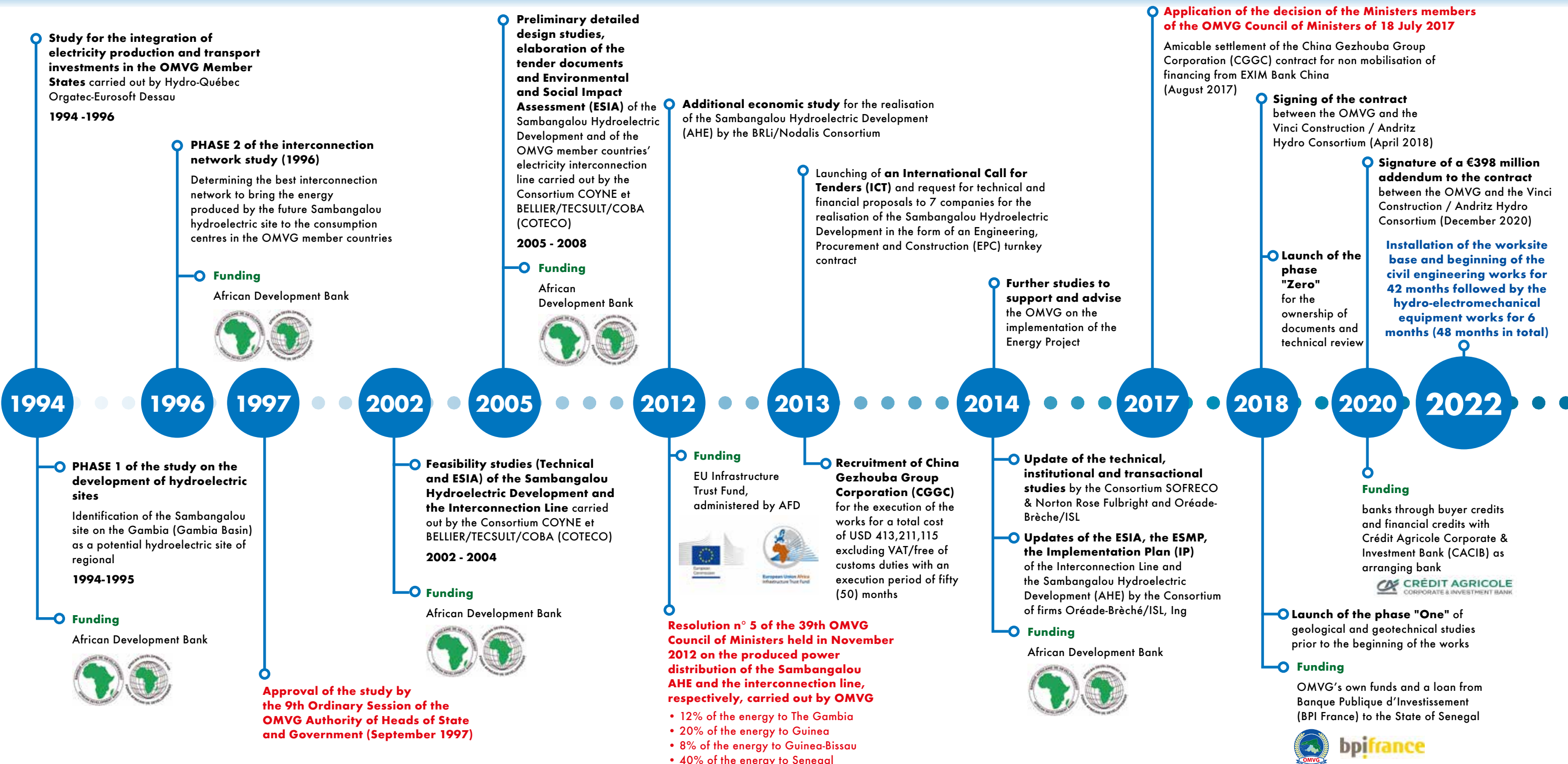
Energy Project Management Unit / PMU OMVG

Cité Keur Gorgui, Villa N-4/03 Rosy Sacré-Cœur, Dakar Sénégal

Tel: (221) 33 821 08 30 / 77 639 76 99 - Email : [courrier@pe-omvg.org](mailto:courrier@pe-omvg.org)



# Key dates of the Sambangalou Hydroelectric Development project



## PRELIMINARY STUDIES

Identification of the site on which the dam and interconnection network will be built, pre-feasibility and feasibility studies, environmental and social impact studies, preliminary detailed design study, elaboration of the tender documents

## ICT AND 1<sup>ST</sup> CONTRACTUALISATION

Launching of the international tender, selection and recruitment of the project manager, updating of the technical and institutional studies and the regulation mechanisms

## 2<sup>ND</sup> CONTRACTUALISATION

Review of existing studies and additional studies, securing of financing, launch of works