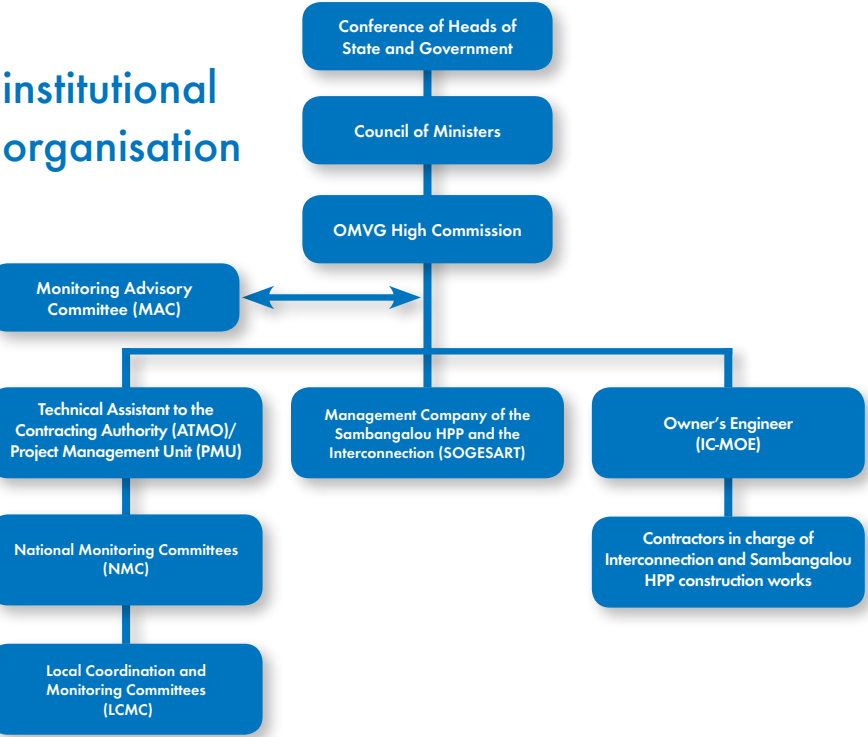


Who are the stakeholders ?

Stakeholder	Role
Contracting Authority <ul style="list-style-type: none">OMVG High Commission	<ul style="list-style-type: none">Supervision of project implementationDefinition of general policy guidelines
Project management <p>The High Commission has established the following mechanisms:</p> <ul style="list-style-type: none">at the regional level: an Energy Project Management Unit (PMU)at the national level: a National Monitoring Committee (NMC) in each Member Stateat the local level: a Local Coordination and Monitoring Committee (LCMC) in each administrative region within the basin area	<ul style="list-style-type: none">Technical, environmental/social, administrative, financial and accounting management
Technical Assistant to the Contracting Authority (ATMO) & Delegated Project Manager <ul style="list-style-type: none">GAUFF consulting firm	<ul style="list-style-type: none">Assistance to the High CommissionCoordination of the PMUTraining and knowledge transfer
Owner's Engineer (IC-MOE) <ul style="list-style-type: none">AECOM	<ul style="list-style-type: none">Control, supervision and surveillance of interconnection and Sambangalou HPP construction works
Partners <ul style="list-style-type: none">West African Power Pool (WAPP)National electricity companies of Member StatesSOGEM / OMVSCote d'Ivoire, Liberia, Sierra Leone and Guinea regional power transmission company (TRANSCO CLSG)Guinea-Mali Interconnection ProjectKaléta and Souapiti hydropower plants	<ul style="list-style-type: none">Operators of the OMVG interconnected network and the Sambangalou HPP, and the Management Company of the Sambangalou HPP and Transmission Network (SOGESART)Members of the Network Governing Board (NGB) and the Network Standing Technical Committee (NSTC)
Technical and Financial Partners (TFP) <ul style="list-style-type: none">African Development Bank /African Development Fund (AfDB/ADF)World Bank/International Development Association (WB/IDA)European Investment Bank (EIB)Islamic Development Bank (IsDB)French Development Agency (AFD)German Development Bank (KfW)Kuwait Fund for Arab Economic Development (KFAED)West African Development Bank (BOAD)	<ul style="list-style-type: none">Project financing with the participation of OMVG Member States and private financing institutions
Contractors <ul style="list-style-type: none">KEC International: Lots L1a, L1b, L6a, L6b, P1a and P1bVINCI/CEGELEC: Lots L2, L3, L5 and L7SUMEC/XD: Lot L4EIFFAGE/ELECNOR: Lots P2, P3, P4a and P4bNCC: Lot P4cSIEMENS: Lot D1/ dispatching & SCADA / construction of two dispatching centres (Kaléta + Sambangalou Kédougou)VINCI Constructions/ANDRITZ Hydro for the construction of the Sambangalou HPP	<ul style="list-style-type: none">Construction of lines, substations, dispatching centres and the Sambangalou hydropower plant

* AfDB is the lead TFP

institutional organisation



THE ENERGY PROJECT IN A NUTSHELL

- 1,646 km of interconnection lines
- 800 MW of transport capacity
- 8 Technical and Financial Partners
- € 1 billion in funding
- 18 contracts signed with 7 contractors
- 90,000 ha of land that can be potentially irrigated

contact

Energy Project Management Unit / PMU OMVG
Cité Keur Gorgui, Villa N-4/03 Rosy Sacré-Cœur, Dakar Sénégal
Tel: (221) 33 821 08 30 /77 639 76 99 - Email : courrier@pe-omvg.org



GAMBIA RIVER BASIN
DEVELOPMENT
ORGANISATION

ORGANISATION
POUR LA MISE EN VALEUR
DU FLEUVE GAMBIE

Energy Project

THE GAMBIA • GUINEA • GUINEA-BISSAU • SENEGAL

our shared hydroelectric resources



environment social Members countries
reserve hydroelectric resources re
interconnection Sambangalou O
energy OMVG Members countries li
n Kaleta Sub-region Souapiti proc
populations WAPP sharing energy
on lines preserve social environm
renewable development interconne
energy transmission OMVS preser
lable integration clean hydroelect
countries local populations energy
reserve environment sub-region
erconnection renewable transmis
nment social Sambangalou inter

the project

The Gambia River Basin Development Organisation (OMVG) is a sub-regional institution with four member States: The Gambia, Guinea, Guinea-Bissau and Senegal.

The OMVG High Commission is the executing agency of the integrated development programmes of the four member States for a rational and coherent development of shared hydroelectric resources in the Gambia, Kayanga-Geba and Koliba-Corubal river basins.

On 4 February 2017 in Kaleta (Guinea), the OMVG launched its ambitious Energy Project. This project includes the construction of a power transmission line interconnecting the electricity grids of the four member countries as well as the construction of a hydroelectric power plant at Sambangalou in Senegal.



objectives

- Supply member States with **clean, renewable and low-cost energy**
- Boost the **electricity market** by sharing hydroelectric resources in the sub-region and **pooling power generation and transmission means**
- Significantly reduce the consumption of fossil fuel thereby preserving the **environment**
- Contribute to **sub-regional integration** and foster **economic growth** in the sub-region
- Improve the **livelihoods** of local populations

technical components



A power transmission line (interconnection)



A hydroelectric power plant at Sambangalou



interconnection line

- **225 kV power transmission line** equipped with 36 pairs of optical fibre
- **1,646 km** including 167 km in The Gambia, 573 km in Guinea, 217 km in Guinea-Bissau and 689 km in Senegal
- **15 HV/MV substations** including 2 in The Gambia, 5 in Guinea, 4 in Guinea-Bissau and 4 in Senegal
- **2 dispatching centres and SCADA centres, and an Image Wall in Dakar**

Sambangalou hydroelectric power plant (HPP)

- 107 m height on foundation
- 3.7 billion m³ of reservoir at normal operating water level
- 128 MW installed capacity
- 402 GWH of annual production capacity
- 188 km² of reservoir at the normal operating water level, straddling Senegal (20%) and Guinea (80%)
- 1,000 jobs in the plan for the construction phase and 1,500 to 2,000 indirect jobs
- 90,000 ha of irrigation potential for agricultural land, including 50,000 ha in The Gambia and 40,000 ha in Senegal
- Regulation of the flow of the Gambia Rivers and reduction of downstream flooding
- Decline of the salt intrusion in The Gambia

environmental and social management

Development and implementation of safeguard documents and measures:

- Environmental and Social Impact Study (ESIS)
- Resettlement Policy Framework (RPF)
- Resettlement Action Plan (RAP)
- Environmental and Social Management Plan (ESMP)

